

## EZ-LINK™ Makes PM PLUS™ and EZ-ZONE® PM Easy to Set Up

Watlow's EZ-LINK™ mobile app allows users to easily set up and monitor Watlow® PM PLUS™ and EZ-ZONE® PM controllers via Bluetooth® wireless technology. The app is available free-of-charge from the app stores for phones and tablets, and provides access to the controller's parameters with fully spelled out names in plain text with help topics that explain each parameter and option.

The EZ-LINK mobile app provides many other benefits to the user including password protection, alarm and error indicators, connection to Watlow for feedback and support and accessing device information such as firmware version, part number and serial number.

The app works with all PM PLUS and 1/16 DIN EZ-ZONE PM controllers and limits with Bluetooth® wireless technology. This option is approved for use in the U.S., Australia, Canada, Columbia, the European Union, Japan, and New Zealand with more locations coming soon.



### Features and Benefits

#### Wireless communications

- Connect to controllers up to 70 feet (21.3 meters away)
- Eliminates need to access the back of the controller, USB-to-485 converter and error-prone wiring

#### Save and import system image files via Bluetooth® NEW!

- Makes a complete record of controller settings in a file
- Accurately copies or restores saved settings from a file to a controller

#### Portable system image files NEW!

- Send and receive files via email, messaging and other sharing methods
- View the controller configuration by opening the file on a PC with Watlow's COMPOSER® software
- Create a file with COMPOSER and email it to a phone to support updating controllers in the field with the app

#### All parameters feature

- Allows users to interactively set up the controller's inputs, control settings, alarms, outputs and other functions

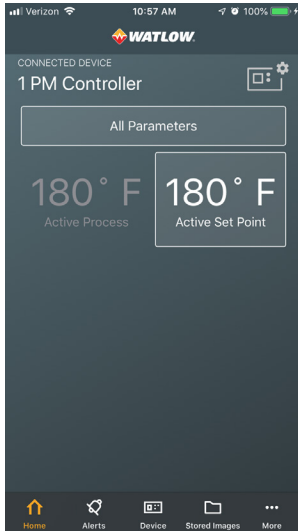
#### Uses controller's custom home page and password security settings

- Adapts to the application by presenting the same parameters as found on the controller's custom home page
- Allows full access, read-only access or no access to home page and all parameters feature based controller's password protection settings

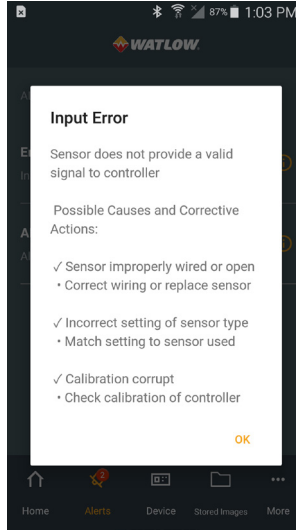
#### Visual device ping and controller naming

- Identifies which controller is connected when several controllers are within range
- Allows user to name the controller and easily find it again the next time

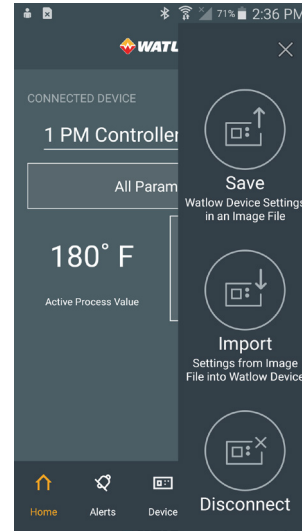
## Illustrated Features



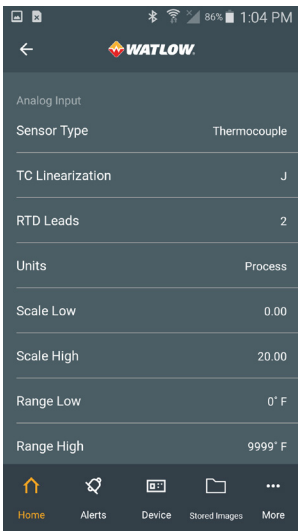
Provides access to controller's home page parameters



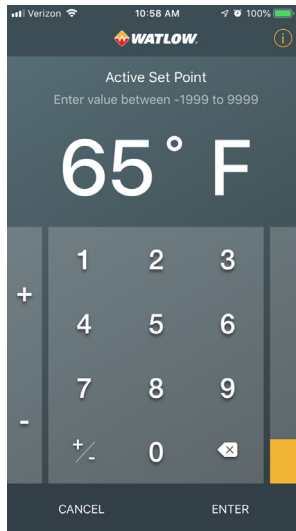
Decodes alarms, errors and messages



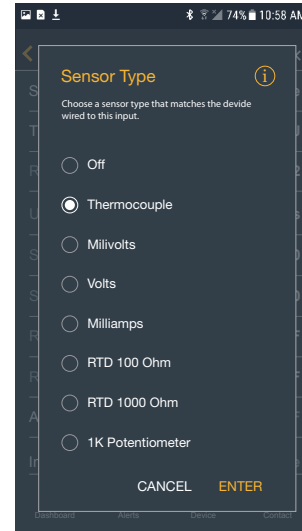
Save and import system image files via Bluetooth®



Makes setting up controllers easy with readable text...



...intuitive operation



...and help for each parameter

## Compatibility

The EZ-LINK mobile application is compatible with all PM PLUS and 1/16 DIN EZ-ZONE PM controllers and limits that have the Bluetooth® communications option.

Watlow®, COMPOSER® and EZ-ZONE® are registered trademarks of Watlow Electric Manufacturing Company.

EZ-LINK™ and PM PLUS™ are trademarks of Watlow Electric Manufacturing Company.

The Bluetooth® word mark and logo are registered trademarks of Bluetooth® SIG, Inc.

Apple® and iPhone® are registered trademarks of Apple Corporation.

Android™ is a trademark of Google LLC.

## System Requirements

### Android™

- Compatible versions: 6, 7, 8 and 9

### Apple®

- Compatible versions: 10, 11 and 12

### Supported devices

- Designed for phones, compatible with tablets. Download the EZ-LINK App at for Android™ or

for iPhone®.

## Powered by Possibility

To be automatically connected to the nearest North American Technical Sales Office:

**1-800-WATLOW2 • www.watlow.com**  
**inquiry@watlow.com**

### International Technical Sales Offices:

<b>Austria</b>	+43 6244 20129 0	<b>India</b>	+91 40 6661 2700
<b>China</b>	+86 21 3532 8532	<b>Italy</b>	+39 02 458 8841
<b>France</b>	+33 1 41 32 79 70	<b>Japan</b>	+81 3 3518 6630
<b>Germany</b>	+49 7253 9400 0	<b>Korea</b>	+82 2 2169 2600

<b>Mexico</b>	+52 442 256 2200
<b>Singapore</b>	+65 6773 9488
<b>Spain</b>	+34 91 675 1292
<b>Taiwan</b>	+886 7 288 5168
<b>UK</b>	+44 115 964 0777