

# Components

## HSP

### Half & Full Sheath Disc Heater

- Solid Disc Design
- 150 - 600 Watts
- 120 and 240 Volt
- Full and Half Sheath Available
- Use Ring Clamp 6018 to Mount Element to Heated Surface

*HSP-3, HSP31  
2 Terminals Only*

*HSP-3-3, HSP31-3  
3 Terminals Only*

*HSP-2.75, w/6/32  
Terminal Bolts*



*Fig. A*

*HSP-2, with leads*



*Fig. B*



Full  
Sheath  
Only



Half  
& Full  
Sheath



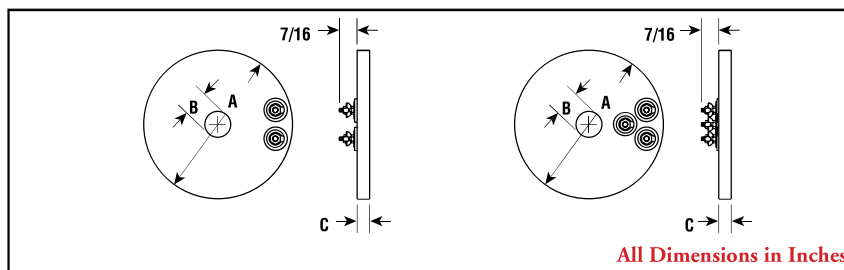
Full  
Sheath  
Only



Full  
Sheath  
Only

STRIP AND RING

#### Dimensions



#### Features

**Single-Heat Discs** — Have two terminals for single wattage on-off switch or thermostat.

**Three-Heat Discs** — Have three terminals that split the heater into 2 equal circuits. Center terminal is common.

**Easy Installation** — Circular shape and use of Mounts with Bolt or Studs simplifies use of disc heaters.

**Half Sheath Units Have Reduced Thermal Gradient to Heated Surface** — Provides faster heat up.

Nest Disc in Ring heaters to pack heat in small area.

#### Specifications and Ordering Information

Dimensions (In.)			Rust-Resisting Iron Sheath								Chrome Steel Sheath								Wt. (Lbs.)
A	B	C	Watts	W/In²	Model	120V		240V		Watts	W/In²	Model	120V		240V				
						Stock	PCN	Stock	PCN				Stock	PCN	Stock	PCN			
Half Sheath — 6/32 Terminal Bolts																			
2-3/4	1/4	11/32	250	18	HSP-2.75	S	185949	—	—	—	—	—	—	—	—	—	—	0.25	
3-1/4	5/16	11/32	200	11	HSP-3	S	185957	—	—	—	—	—	—	—	—	—	—	0.3	
3-1/4	5/16	11/32	400	21	HSP-3	S	185965	—	—	—	—	—	—	—	—	—	—	0.3	
3-1/4	5/16	11/32	150	8	HSP-3-3	S	185973	—	—	—	—	—	—	—	—	—	—	0.3	
Full Sheath — 6/32 Terminal Bolts																			
3-1/4	13/64	5/16	400	24	HSP-31	S	255513	—	—	—	—	HSP-310	—	—	—	143116	—	0.4	
3-1/4	13/64	5/16	400	24	HSP-31	—	—	S	255521	—	—	—	—	—	—	—	—	0.4	
3-1/4	13/64	5/16	400	24	HSP-31-3	S	255530	—	—	—	—	HSP-310-3	—	143108	—	—	—	0.4	
Half Sheath — Lead Wires																			
2-1/4	1/4	1/4	150	15	HSP-2	NS	185930	—	—	250	26	HSP-20	S	274191	—	—	—	0.2	
Half Sheath — 6/32 Terminal Bolts																			
3-1/4	9/32	11/32	600	31	—	—	—	—	—	600	31	HSP-30	S	129306	—	—	—	0.3	
3-1/4	9/32	11/32	400	21	—	—	—	—	—	400	21	HSP-30-3	S	185981	—	—	—	0.3	
Stock Status: S = stock NS = non-stock To Order—Specify model, PCN, watts, volts and quantity. 1. “-3” in model number indicates 3 heat																			

**Stock Status:** S = stock NS = non-stock  
**To Order—**Specify model, PCN, watts, volts and quantity.  
 1. “-3” in model number indicates 3 heat